



CAYSON

CULINARY DESIGNS



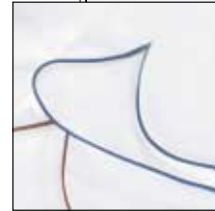
Details. Details. Details.



THE DIFFERENCE IS IN THE DETAILS...

Detailed Service — From Design to Reorder.

- We purchase the finest raw materials and manufacture our uniforms in our own San Francisco factory.
- We use the highest quality Pima Cotton, valued for its great softness, luster, and its long fibers that create a sturdier fabric.
- We make our own unique cloth-covered buttons.
- All pockets feature reinforced corners.
- All Chef's Jackets have embroidered underarm eyelets.
- All designs combine style, comfort, and durability.
- We maintain a commitment to the highest quality of customer service.
- Our personal embroidery database for each customer ensures accuracy.



Piping Colors



Front Pocket



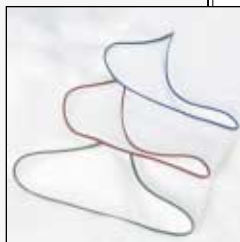
Underarm Eyelets



*Cloth-Covered
Buttons*

Style 2000

The classic design is enhanced with our 100% Pima Cotton.



Style 2004

Three colors of piping available.

CAYSON EXECUTIVE CHEF'S JACKETS

CLASSIC EXECUTIVE CHEF'S JACKET

- 100% combed Pima Cotton, double breasted with unique covered buttons.
- Welt pocket on left chest and pocket on left sleeve.
- Four embroidered air vents under each arm.
- Available in white or charcoal grey.
- Unisex sizing.

Style 2000

SIZES: 30-62 and 40-58 Long

EXECUTIVE CHEF'S JACKET WITH PIPING

- Choice of indigo blue, forest green, or deep burgundy piping.
- 100% combed Pima Cotton, double breasted with unique covered buttons.
- Welt pocket on left chest and pocket on left sleeve.
- Four embroidered air vents under each arm.
- Unisex sizing.

Style 2004

SIZES: 34-58



Style 2000



Style 2004

— CAYSON WOMEN'S EXECUTIVE CHEF'S JACKETS



Women's Style 2020



Style 2200

WOMEN'S CHEF'S JACKET

- 100% combed Pima Cotton chef's jacket is designed specifically for a woman.
- Double breasted with unique covered buttons.
- Back and side seams facilitate alteration.
- Two side vents allow for additional ease at hips.
- Pen pocket on left sleeve and embroidered armhole air vents.

Style 2020

SIZES: 2-26

*Another little
detail we haven't
overlooked:
air vents.*



CAYSON CHEF'S JACKETS



Style 2200



CROSSOVER COLLAR CHEF'S JACKET

- Crossover collar with white self piping, 100% combed Pima Cotton.
- Double breasted with unique covered buttons.
- Pen pocket on left sleeve and embroidered armhole air vents.
- Unisex sizing.

Style 2200

SIZES: XS-4XL

STYLISH LINE COAT

- Poly/cotton chef jacket with great style.
- Double breasted with unique covered buttons.
- Pen pocket on left sleeve.
- Embroidered armhole air vents.
- Unisex sizing.

Style 2115

SIZES: XS-5XL



Pen pocket on left sleeve is a standard feature of our Executive Chef's Jacket.



Style 2200



Style 2115

— CAYSON SHORT SLEEVE CHEF'S JACKET & SHIRT



Style 2225



Style 2600

SHORT SLEEVE CHEF'S JACKET

- Crossover collar jacket with white self piping, 100% combed Pima Cotton.
- Double breasted with unique covered buttons, left sleeve pen pocket.
- Available in white.
- Unisex sizing.

Style 2225

SIZES: XS-4XL

DESIGNER COOK'S SHIRT

- 100% combed Pima Cotton.
- Pocket set into left front yoke.
- Two side seam vents, faux white shell buttons.
- Available in white.
- Unisex sizing.

Style 2600

SIZES: XS-4XL

Side vents on 2600 shirt enable freedom of movement.



Style 2600's unique pocket detail.

CAYSON CHEF'S PANT

This right side cell phone pocket offers an easy-to-reach, convenient place.



Style 4000

CHEF'S PANT

- 100% cotton chef pant.
- Offer a generous, yet flattering fit.
- 1-1/4" elastic waistband with a draw cord.
- Two back pockets, two side seam pockets, and cell phone pocket.
- Available with or without a zippered fly.
- Choose classic, small hounds tooth, yarn dye check or solid black twill.

Style 4000

SIZES: XS-XL and 2XL-3XL



Style 4000



Style 4000



CAYSON CHEF'S HATS



Style 7200



Style 7600

CAYSON BAKER'S CAP

- A classic cap.
- 4" band and Velcro closure.
- Offered in white 100% cotton or black cotton/poly.

Style 7200

SIZES: *One Size Fits Most*

CAYSON CHEF'S BERET

- Stylish and trendy.
- Velcro closure.
- 100% cotton available in brown/tan check, white, charcoal grey, and black/white check.
- Also available in crusader blue or black cotton/poly.

Style 7600

SIZES: *One Size Fits Most*

*Detailed
workmanship
is evident in all our
hats and berets.*



CAYSON WAITER & BUSSER JACKETS



STAND COLLAR JACKET

- Multi-purpose jacket.
- 2 front pockets reinforced at corners.
- Body has a generous length.
- Available in white Pima Cotton or black cotton/poly and white cotton/poly.
- Unisex sizing.

Style 3000

SIZES: XS-XL and 2XL-3XL

WRAP COLLAR JACKET

- Features an updated look with a wrap collar and 5 unique covered buttons.
- Same cut as our Stand Collar Jacket (above).
- Available in white Pima Cotton or black cotton/poly.
- Unisex sizing.

Style 3100

SIZES: XS-XL and 2XL-3XL

The wrap collar features a button with a stylish band collar.



Style 3000



Style 3100



CAYSON SERVER & BAR JACKETS



Men's Style 6000



Women's Style 6000

TRADITIONAL

CLUB ROOM JACKET

- Suitable for bartenders and servers.
- 3 button lapel jacket.
- 2 front welt pockets.
- Available in white 100% Pima Cotton or creme poly/cotton.
- Unisex sizing.

Style 6000

SIZES: XS-XL and 2XL-3XL

Tailored front pocket.



CLASSIC ITALIAN WAITER'S JACKET



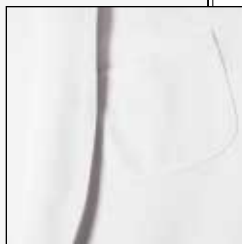
MEN'S & WOMEN'S CLASSIC ITALIAN WAITER'S JACKETS

- Shawl collar and one button closure.
- 2 front pockets and one breast pocket.
- Available in white 100% Pima Cotton or white cotton/poly.
- Unisex sizing.

Style 5500

SIZES: XS-XXL

*Choose from these
classic lines and styles
for your male and
female servers.*



Men's Style 5500



Women's Style 5500



CAYSON SERVER & BAR JACKETS



Men's Style 1500



Women's Style 1600

MEN'S & WOMEN'S CLASSIC BAR COAT

- Separate sizing for men and women.
- Classic shawl collar.
- Two inside pockets.
- Linked button closure.
- Available in white 100% Pima Cotton or creme poly/cotton.

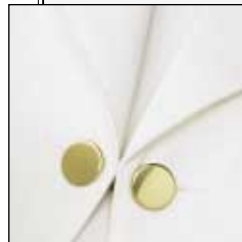
Style 1500

SIZES: Men's 36-52

Style 1600

SIZES: Women's XS-XL

*Our brass buttons
add a classy detail
to a classic jacket.*



CAYSON WAITER'S VESTS



*The back belt on
Style 3200 adjusts
for a tailored fit .*



TRADITIONAL TAILORED VEST

- Traditional 5 button tailored vest.
- Two front welt pockets.
- Two inside pockets reinforced at the corners.
- Adjustable back belt.
- Front is 100% wool; back and inside are sturdy poly lining.
- Available in black or burgundy wool with black lining.

Style 3200

sizes: Men's S-3XL and M Long-XL Long

Style 3300

sizes: Women's S - 3XL

BANDED COLLAR SHIRT

- Available in men's or women's sizes.
- White or french blue.
- 100% cotton.

Style 1620

sizes: Men's S-3XL and Women's XS-3XL



Men's Style 3200



Women's Style 3300 and 1620 (in white)



CAYSON APRONS



Style 1480



Style 1450 and 1620 (in french blue)

BIB APRON

- 38" long; skirt width 27" with two pockets.
- Adjustable fastener at neck.
- Available in white or charcoal grey 100% cotton and black poly/cotton.

SIZES: One size fits most

CLASSIC BISTRO APRONS

- Styled for ease of movement.
- 36" long.
- White cotton or poly/cotton offered with no pocket, one pocket or two pockets.
- Black poly/cotton is reversible, two pockets on each side.

SIZES: Regular (46" waist) and Slim (35" waist)

MINI APRON

- 19" long, 30" wide with two pockets.
- Available in black poly/cotton.

SIZES: One size fits most

*Our Cayson
signature Bistro
Apron wraps
around the back.
Available in
two sizes.*





EMBROIDERY SERVICES

We're better known by the companies we keep...

Cayson Culinary Designs can provide you with our in-house embroidery services to assure the quality and accuracy of your logo or monogram. To prevent fading, we use only polyester thread. To digitize your logo, we have a one time fee. The final embroidery price is based on your stitch count. Please email your logo to us at embroidery@caysondesigns.com for a free estimate.

In addition to embroidery on our line of exceptional culinary garments, we can also provide you with embroidered polo shirts, sweatshirts, baseball hats, and specialty items. For monogramming choose from 6 fonts shown here:

Block	Brantford	Russ Times
<i>Designer</i>	<i>Brush Script</i>	<i>Traditional Script</i>

A Final Detail...

As part of our unmatched service, we create a computer data file with your font style, thread color, embroidery placement, plus your chef's sizing—so reorders are always quick and accurate.

CAYSON CULINARY DESIGNS —————

Rare Quality. Well Done.

Cayson Culinary Designs was established in 1992 by Lynette Cayson and the late Eddie Cayson. Today, the Cayson philosophy remains the same:

- Create superb quality garments;
- Offer unsurpassed value and attention to detail;
- Provide unmatched service; and
- Made in San Francisco.

Lynette Cayson is a Certified WBE (Woman Business Enterprise), with an extensive garment production background. You can be assured that designs will be tailored to your needs. Our in-house production team allows us to maintain quick response and the highest standards for all of our classic designs.

When you call Cayson Culinary Designs, be assured you will experience customer service as it was meant to be.



PHONE:
415.695.9596 or
800.971.CHEF (2433)

FAX:
415.695.1914

EMAIL:
info@caysondesigns.com

WEB:
www.caysondesigns.com

✦ CAYSON CULINARY DESIGNS ✦

2285 Palou Avenue

San Francisco, California 94124

415.695.9596 www.caysondesigns.com